

Compare volume

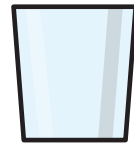
1 Here are three glasses.



A



B



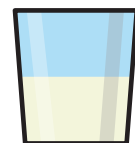
C

a) Which glass is empty? _____

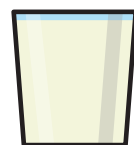
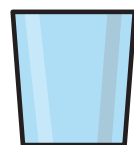
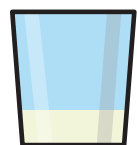
b) Which glass is half full? _____

c) Which glass is full? _____

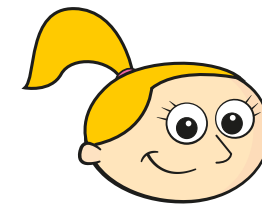
2 Tommy has some milk in a glass.



Circle all the glasses that have more milk than Tommy's.

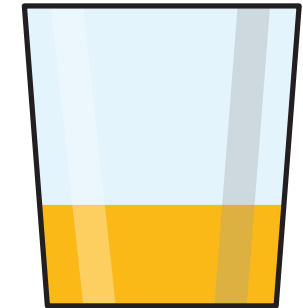


3 Eva, Ron and Amir have some juice.

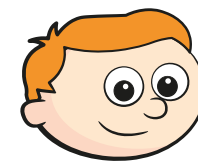


This is my juice.

Eva

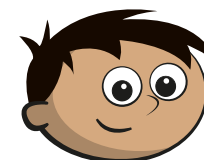
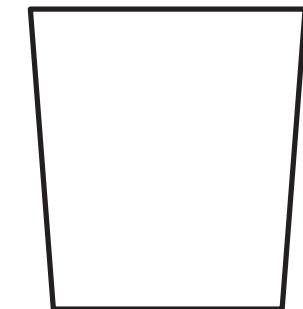


Shade the glasses to show how much juice Ron and Amir could have.



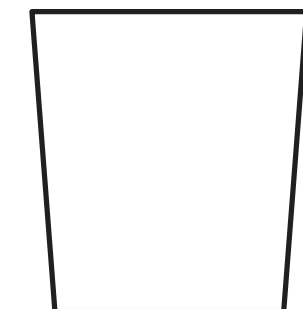
I have more
juice than Eva.

Ron



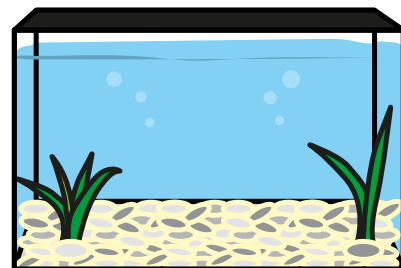
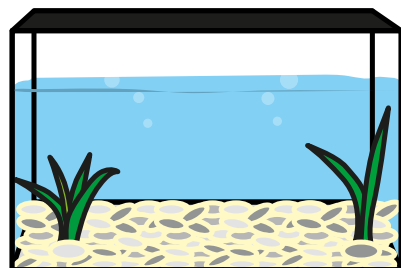
I have less
juice than Eva.

Amir

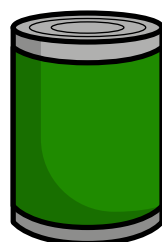


Compare answers with a partner.

- 4 Which fish tank contains less water?
Tick your answer.



- 5 Tick the object with the greater capacity.



- 6 Tick the object with the greatest capacity.



- 7 Put these objects in order of how much water they can hold.
Start with the object that has the smallest capacity.



A



B



C

smallest

greatest

- 8 Whitney says B contains more water than A.



A



B

Why might Whitney think this?
What could she do to check?