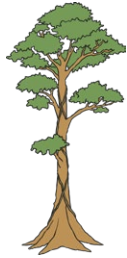


# Year 2 Summer Term 1

3

Draw two lines to name the types of sentences.



a

There are lots of trees in the rainforest.

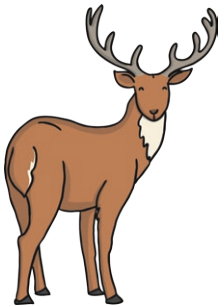
statement

Don't cut down the trees.

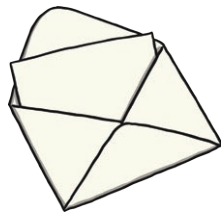
command

Circle the correct homophone for each picture.

b



deer / dear



deer / dear

Underline the verbs in this sentence.

c

**They talked and rode their scooters all the way home.**



Change this word into an adjective by adding the suffix **-ful** or **-less**.

d

**help**

Remember, you may need to make changes.

\_\_\_\_\_

Oops, Mr Whoops has made a punctuation mistake. Help him by correcting his apostrophe.

e

**It was Da'ras turn to roll the dice next.**



Extend this sentence using the conjunction 'or'.

f

**I will climb every hill...**

\_\_\_\_\_

\_\_\_\_\_

\_\_\_\_\_

\_\_\_\_\_

# Year 2 Summer Term 1 Answers

3

Draw two lines to name the types of sentences.

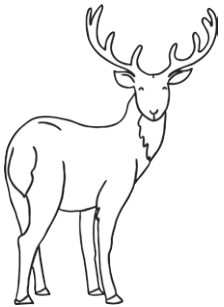
a

There are lots of trees in the rainforest. — statement

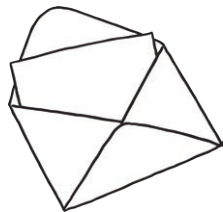
Don't cut down the trees. — command

Circle the correct homophone for each picture.

b



(deer) / dear



deer / (dear)

Underline the verbs in this sentence.

c

**They talked and rode their scooters all the way home.**

Change this word into an adjective by adding the suffix **-ful** or **-less**.

d

**help**

Remember, you may need to make changes.

**helpful or helpless**

Oops, Mr Whoops has made a punctuation mistake. Help him by correcting his apostrophe.

e

**It was Dara's turn to roll the dice next.**

Extend this sentence using the conjunction 'or'.

f

**I will climb every hill...**

**Answers will vary.**

**The rest of the sentence must include 'or' and make sense.**

# Year 2 Summer Term 1

3

Draw three lines to name the types of sentences.



There are lots of trees in the rainforest.

Don't cut the trees down.

How many trees are in the rainforest?

statement

question

command

a

Underline the verbs in this sentence.

**Keith and Tomek quickly rode their scooters while chatting and singing.**



c

Change this word into an adjective by adding the suffix **-ful** or **-less**.

**help**

**care**

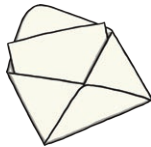
Remember, you may need to make changes.

d

Circle the correct homophone for each picture.



deer / dear



deer / dear



mail / male



mail / male

b

Oops, Mr Whoops has made two punctuation mistakes. Help him by correcting his commas and apostrophe.

**It was Da'ras turn to roll the dice next as they played Kings, Queens Princes and, Princesses.**



e

Extend this sentence using the conjunction 'or'. Write the whole new sentence in full.

**I will climb every hill...**

---

---

---

---

f

# Year 2 Summer Term 1 Answers

3

Draw three lines to name the types of sentences.

There are lots of trees in the rainforest.

Don't cut the trees down.

How many trees are in the rainforest?

statement

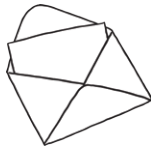
question

command

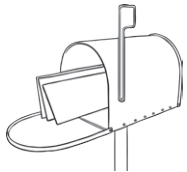
Circle the correct homophone for each picture.



deer / dear



deer / dear



mail / male



mail / male

Underline the verbs in this sentence.

**Keith and Tomek quickly rode their scooters while chatting and singing.**

Change this word into an adjective by adding the suffix **-ful** or **-less**.

**help      care**

Remember, you may need to make changes.

**helpful or helpless**

**careful or careless**

Oops, Mr Whoops has made two punctuation mistakes. Help him by correcting his commas and apostrophe.

**It was Dara's turn to roll the dice next as they played Kings, Queens, Princes and Princesses.**

Extend this sentence using the conjunction 'or'. Write the whole new sentence in full.

**I will climb every hill...**

**Answers will vary.**

**The extended sentence must include the starter words spelt correctly, use 'or' and make sense.**

# Year 2 Summer Term 1

3

Draw four lines to name the types of sentences.

How many trees are there?

There are lots of trees in the rainforest.

Don't cut down the trees.

How fantastic it is to visit the rainforest today!



question

exclamation

statement

command

a

Underline the adjectives and circle the verbs in this sentence.

**Keith and Tomek quickly rode their glistening, sparkly scooters while they chatted on the way home.**



c

Change this word into an adjective by adding the suffix **-ful** or **-less**.

**help      care      doubt**

Remember, you may need to make changes.

---

---

---

d

Circle the correct homophone for each picture.



deer / dear



deer / dear

Write the correct spellings:



---

---

b

Oops, Mr Whoops has made four punctuation mistakes. Help him by correcting his commas and apostrophes.

**It was Da'ras turn to roll the dice next and then Ane'eshas as they played, Kings Queens Princes and, Princesses.**



e

Write your own extended sentence about this picture using the conjunction 'or'.



---

---

---

---

f

# Year 2 Summer Term 1 Answers

3

Draw four lines to name the types of sentences.

How many trees are there?

There are lots of trees in the rainforest.

Don't cut down the trees.

How fantastic it is to

visit the rainforest today!

question

exclamation

statement

command

a

Underline the adjectives and circle the verbs in this sentence.

Keith and Tomek quickly rode their glistening, sparkly scooters while they chatted on the way home.

c

Oops, Mr Whoops has made four punctuation mistakes. Help him by correcting his commas and apostrophes.

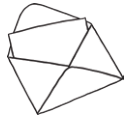
It was Dara's turn to roll the dice next and then Aneesh's as they played Kings, Queens, Princes and Princesses.

e

Circle the correct homophone for each picture.



deer / dear



deer / dear

Write the correct spellings:



mail



male

b

Change this word into an adjective by adding the suffix -ful or -less.

help care doubt

Remember, you may need to make changes.

helpful or helpless

careful or careless

doubtful or doubtless

d

Write your own extended sentence about this picture using the conjunction 'or'.

Answers will vary.

The extended sentence must relate to the picture, include 'or' and make sense.

f